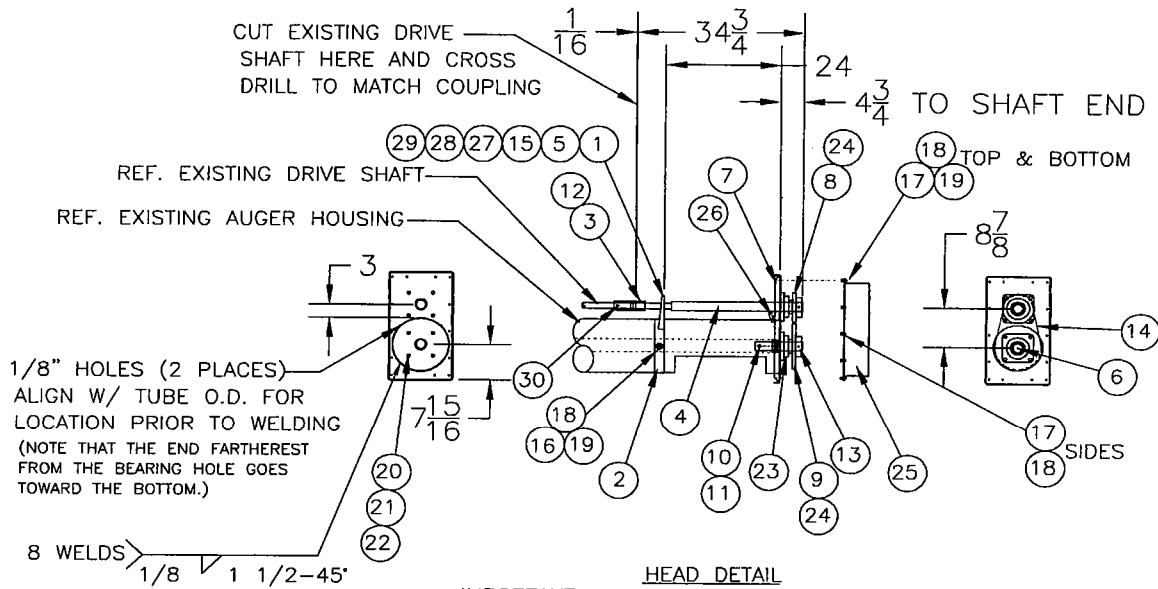


12" HEAD DRIVE FIELD RETROFIT KIT FOR CENTURY & TD-PLUS AUGERS



HEAD DETAIL

IMPORTANT:
 AFTER FIELD ASSEMBLY APPROXIMATELY 6 PINTS OF 90 WT. GEARLUBE SHOULD BE ADDED TO THE HEAD COVER THROUGH THE 1/2" PIPE PORT ON THE SIDE OF THE COVER.

REF. NO.	QTY.	PART NO.	DESCRIPTION
1	1	6144A1	Band-on Bearing Stand
2	1	5269A1	Half Band for Bearing Stand
3	1	1014196	Drive Shaft Coupler
4	1	1018422	Head Drive Shaft, 2" x 34 3/4" lg.
5	2	3029A2	Bearing, 1.25" Flangette only
6	1	1018516	Head Stub Shaft
7	1	1018305	Head Plate
8	1	1013833	Sprocket, 15 Tooth, 2" Bore
9	1	1013834	Sprocket, 24 Tooth, 2" Bore
10	2	1002204	5/8" x 4" HHCS (Grade 5)
11	2	33139	5/8" Lock Nut
12	2	8371C	1/4" Sq. x 1 1/2" lg. Key
13	2	1018682	7/16" x 4" lg. Spiral Roll Pin
14	1	1018533	RC100 Chain w/Connecting Link
15	1	3027A1	Bearing & Collar 1.25"
16	2	4736	5/16" x 1 1/2" lg. HHCS (Grade 5)
17	14	4701-1	5/16" x 3/4" lg. HHCS (Grade 5)
18	16	33144	5/16" Lock Washer
19	10	33151	5/16" Non-Lock Nut
20	8	33244	5/8" x 2" lg. HHCS (Grade 5)
21	8	D1171	5/8" Lock Washer
22	8	D1170	5/8" Non-Lock Nut
23	2	2214C	2" Flange Bearing
24	2	4050A1	1/2" Sq. x 2" lg. Key
25	1	1018386	Head Cover Weldment
26	1	1018508	Drive Shaft Cover Bracket
27	3	1002247	3/8" x 3/4" lg. Carriage Bolt
28	3	D1150	3/8" Lock Washer
29	3	D1149	3/8" Non-Lock Nut
30	2	3001A1	7/16" x 1 3/4" Roll Pin