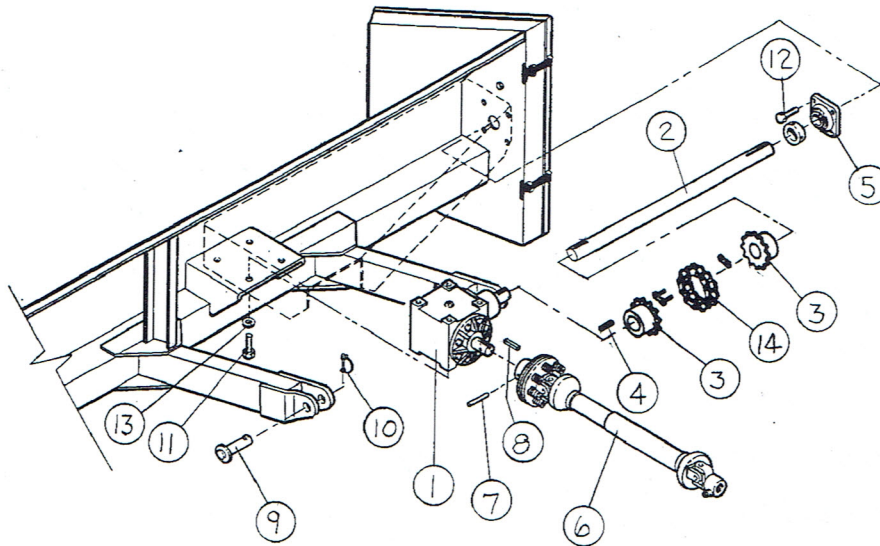


PARTS LIST

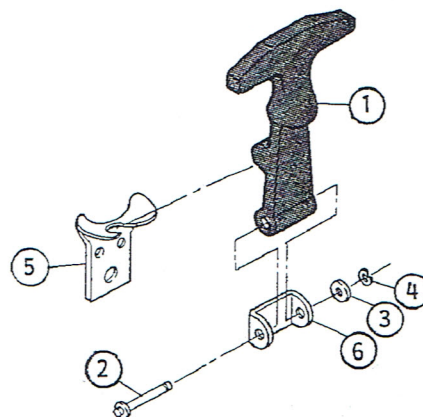
DRIVE SHAFT & HITCH COMPONENTS



REF. NO.	PART NO.	DESCRIPTION
1	1018914	Gearbox (See pages 11 & 12 for breakdown)
2	1022078	Drive Shaft
3	1022080	Coupler Half, RC80-12T
4	1038D	3/8" x 2" Sq. Key
5	1010A	1 1/2" 4-Hole Flange Bearing
6	1016538	PTO Driveline (See page 10 for breakdown)
7	33190	5/16" x 2 1/2" Roll Pin
8	4048A1	5/16" x 2" Sq. Key
9	631236	1" Washer Head Hitch Pin
10	3093R1	1/4" x 2" Lynch Pin
11	33082	1/2" x 1" HHCS
12	33290	1/2" x 1 1/2" HHCS
13	D1143	1/2" Lock Washers
Not shown	D1169	1/2" Nut
Not shown	33157	5/16" Wing Nut
14	41051	Chain, Flex Coupler, #80 12T w/Conn. Link

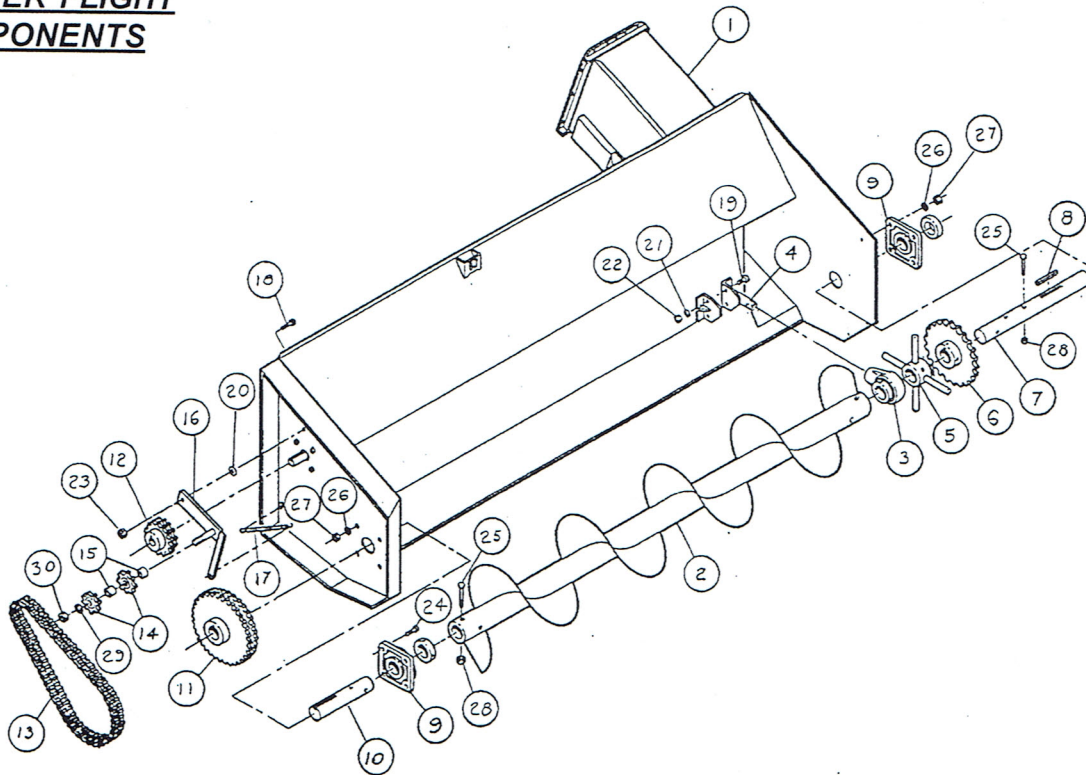
RUBBER LATCH DETAIL

REF. NO.	PART NO.	DESCRIPTION
1	41642	Rubber Handle
2	41639	Pin
3	41780	Washer
4	41638	Retaining Ring
5	41640	Anchor
6	41641	Bracket



PARTS LIST

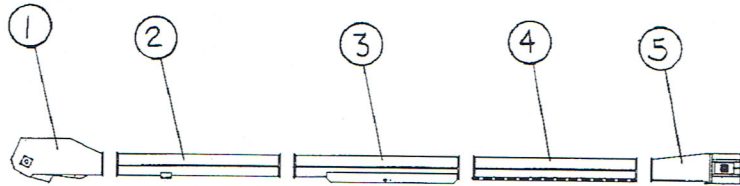
HOPPER FLIGHT COMPONENTS



REF. NO.	PART NO.	DESCRIPTION
1	1022478	Boot Housing Weldment
2	631215	Flight Weldment
3	41053	2 7/16" Hanger Bearing
4	631212	Hanger Bearing Mount
5	631294	Spoked Wheel
6	420065	16 Tooth Sprocket w/2 7/16" Bore
7	553229	Boot Shaft
8	53060	5/8" Sq. Key x 3 3/4" lg.
9	3090L1	2-7/16" - 4-Hole Flange Bearing
10	553230	Drive Stub
11	420110	45 Tooth Double 80 Sprocket w/2-7/16" Bore
12	40210	19 Tooth Double 80 Sprocket w/1-1/2" Bore
13	553373	72 Pitch of Double 8 Chain w/Connecting Link
14	40953	#80 Idler Sprocket
15	553242	Idler Spacer Bushings
16	631214	Idler Arm
17	6823P	Idler Spring
18	33290	1/2" x 1-1/2" HHCS
19	33082	1/2" x 1-1/4" HHCS
20	33025	1/2" Flat Washer
21	D1143	1/2" Lock Washer
22	D1169	1/2" Nut
23	33138	1/2" Lock Nut
24	D1144	5/8" x 2" HHCS
25	33105	5/8" x 4-1/2" HHCS
26	D1171	5/8" Lock Washer
27	D1170	5/8" Nut
28	33139	5/8" Lock Nut
29	D1153	3/4" Lock Washer
30	D1152	3/4" Nut

PARTS LIST

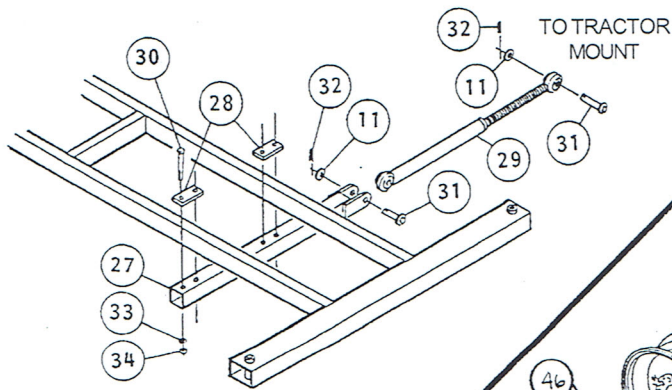
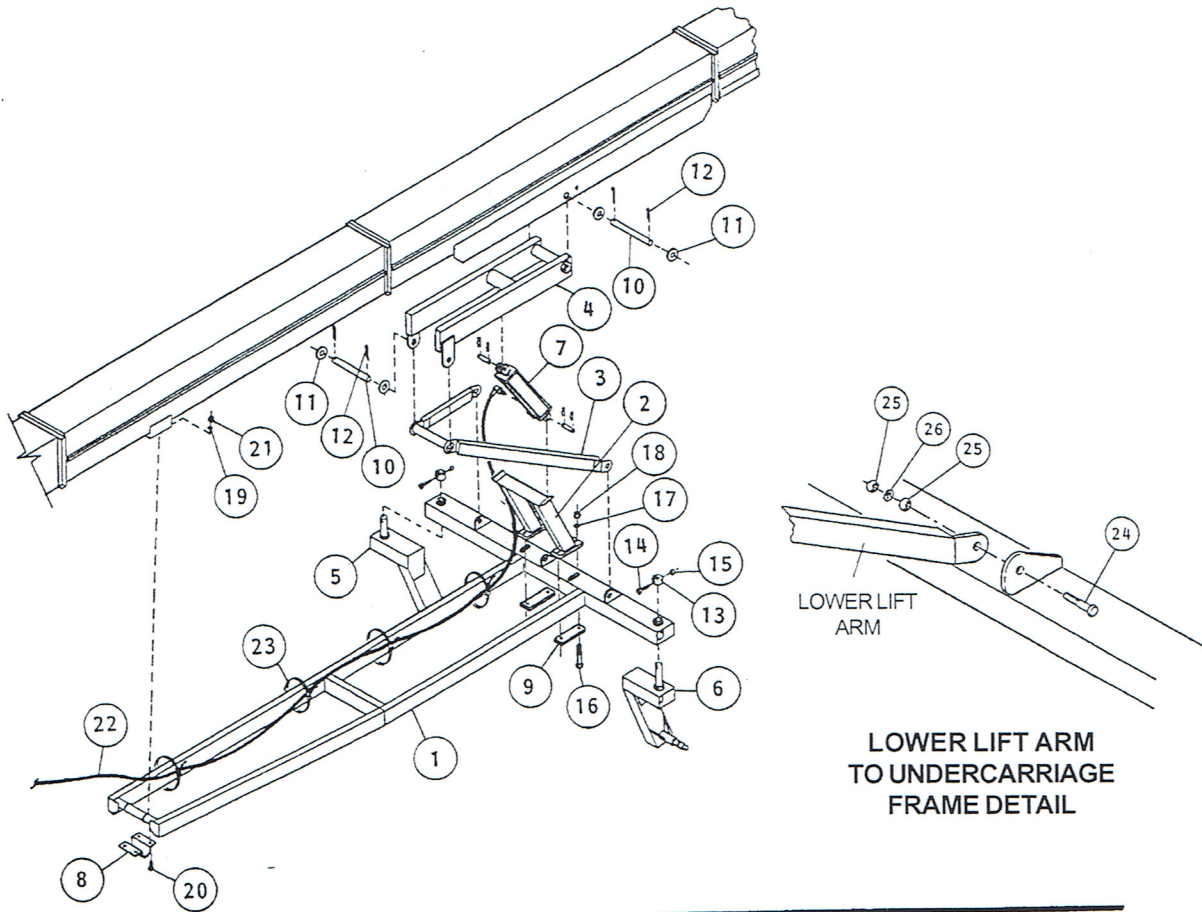
TRUNK SECTION



40' MODEL

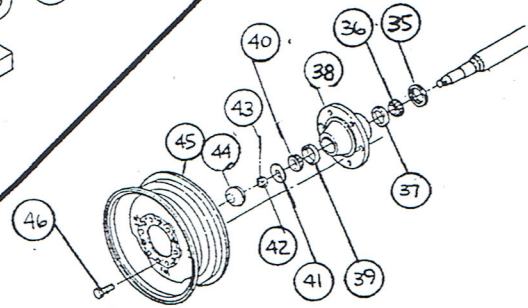
REF. NO.	PART NO.	DESCRIPTION
1	1022082	Complete Boot Hopper w/Assembly (w/Flight, Drive Shaft, Sprocket, Gearbox, Pulley and Belt) NOTE: See page 3 for breakdown of Hopper Components
2	1005740	1st 10'-0" long Trunk Section with Lower Undercarriage Mount used on 40' & 50' unit
3	1005741	2nd 10'-0" long Trunk Section with Lift Arm Mount used on 40' & 50' unit
4	1005742	3rd 10'-0" long Trunk Section used on 40' & 50' unit
5	1005739	Complete Head Section Assembly w/Sprocket, Bearings and Take-up Slide NOTE: See page 7 for Head Components

UNDERCARRIAGE COMPONENTS



FRONT ATTACHMENT COMPONENTS

SPINDLE AND HUB COMPONENTS



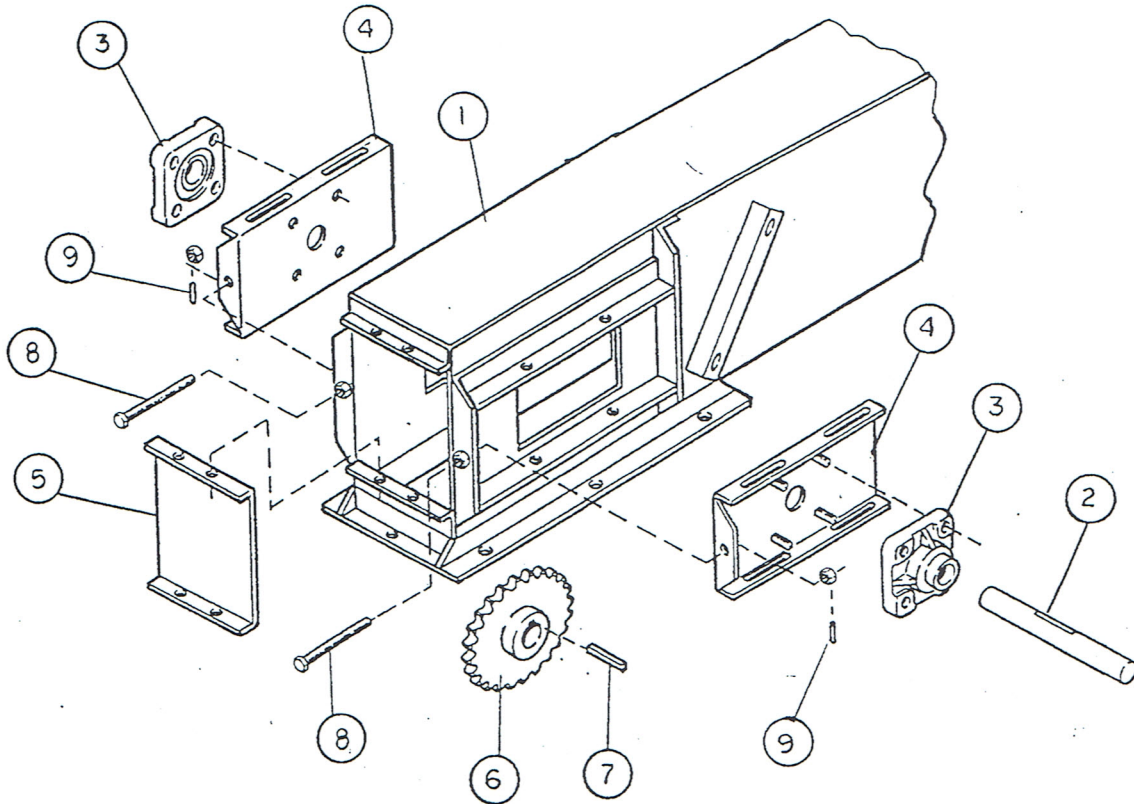
PARTS LIST

UNDERCARRIAGE COMPONENTS

REF. NO.	PART NO.	DESCRIPTION
1	130236	Undercarriage Frame Weldment (150" long x 84' wide)
2	631293	Transport Rest Weldment
3	130237	Lower Lift Arm Weldment
4	130238	Upper Lift Arm Weldment
5	631230	Castor Weldment
6	631231	Castor Weldment - Right
7	1004368	Hydraulic Cylinder 3-1/2" dia. x 24" stroke (See page 13 for parts) (1-1/2" dia rod, 1" dia. mounting clevis w/vent plug)
8	8387D	Lower Undercarriage Clamp
9	553456	Clamp Plate for Transport Rest (3" x 9")
10	553297	Pin 1" x 15 3/8" long
11	D1160	Flat Washer 1" I.D.
12	D1263	Cotter Pin 1/4" x 2" long
13	553244	Lock Collar 2" I.D. x 2 7/16" O.D. x 1-1/2" long
14	33091	Bolt 1/2" x 3" long (Grade 5)
15	33138	Lock Nut 1/2"
16	33116	Bolt 3/4" x 6" long (Grade 5)
17	D1153	Lock Washer 3/4"
18	D1152	Nut (non-lock) 3/4"
19	D1143	Lock Washer 1/2"
20	33247	Bolt 1/2" x 1-3/4" long (Grade 5)
21	D1169	Nut (non-lock) 1/2"
22	1002699	Hydraulic Hose 1/2" x 25'-0" long with 90° elbow end w/restrictor
23	40310	Plastic Tie-down
24	631255	Bolt 1" x 4" long
25	D1158	Nut (non-lock) 1"
26	D1159	Lock Washer 1"
27	631233	Attachment Arm 42 1/2" long
28	553279	Clamp Plate for Attachment Arm 2-1/2" x 5"
29	631232	Attach Arm Turnbuckle
30	33280	Bolt 5/8" x 9" long
31	631236	Headed Pin 1" x 5-5/16" Overall Length
32	3093R1	Lynch Pin 1/4" x 2" long
33	D1171	Lock Washer 5/8"
34	D1170	Nut (non-lock) 5/8"
35	D1072	Grease Seal
36	3078R1	Inner Cone (LM48548)
37	3147R1	Inner Cup (LM48510)
38	D1251	6-Bolt Hub (includes cups, Ref. No's 37 & 39)
39	3148R1	Outer Cup (LM67010)
40	3079R1	Outer Cone (LM67048)
41	D1148	7/8" Washer
42	D1147	7/8" Slotted Hex Nut
43	D1146	5/32" x 1-1/4" Cotter Pin
44	40588	Hub Cap
45	D1252	15" x 6" LB 6-Bolt Wheel
46	D1077	Lug Bolt

PARTS LIST

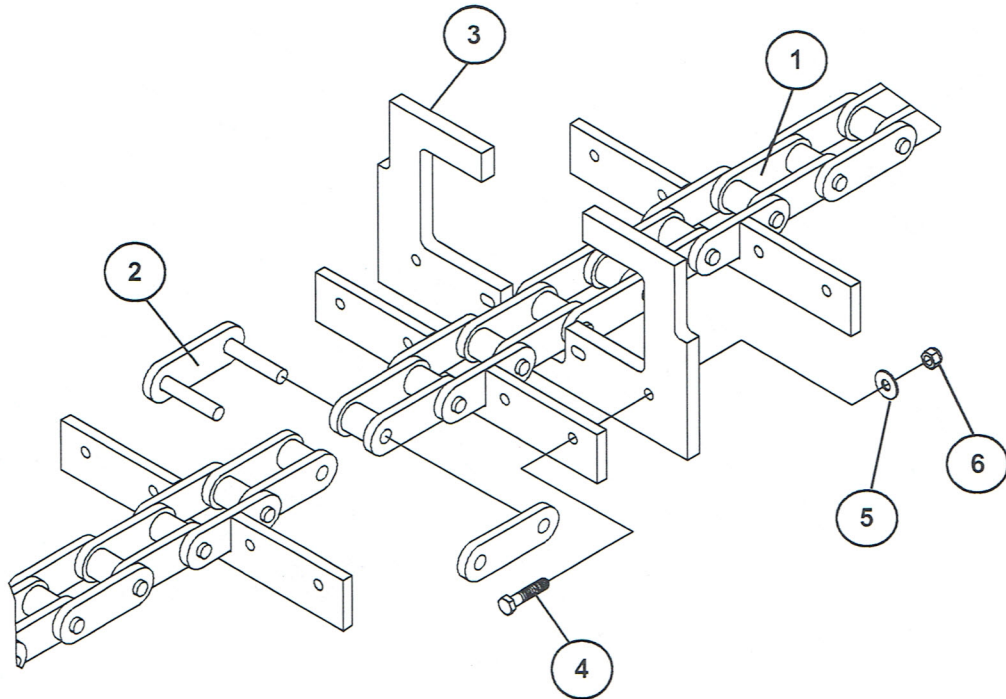
HEAD SECTION



REF. NO.	PART NO.	DESCRIPTION
1	1003830	Head Section Weldment (Includes Door, item no. 5)
2	553276	Head Shaft 2-7/16" x 19-3/8" long (Turn down to 2" on the ends)
3	2214C	2" Bore 4-Hole Flange Bearing
4	61223	Take-up Slide
5	50609	Inspection Door
6	420065	16 Tooth 81 Sprocket 2-7/16" Bore
7	53060	Drive Key 5/8" x 3-3/4"
8	61147	Take-up Bolt w/two nuts
9	31121	Roll Pin 3/16" x 1" long

PARTS LIST

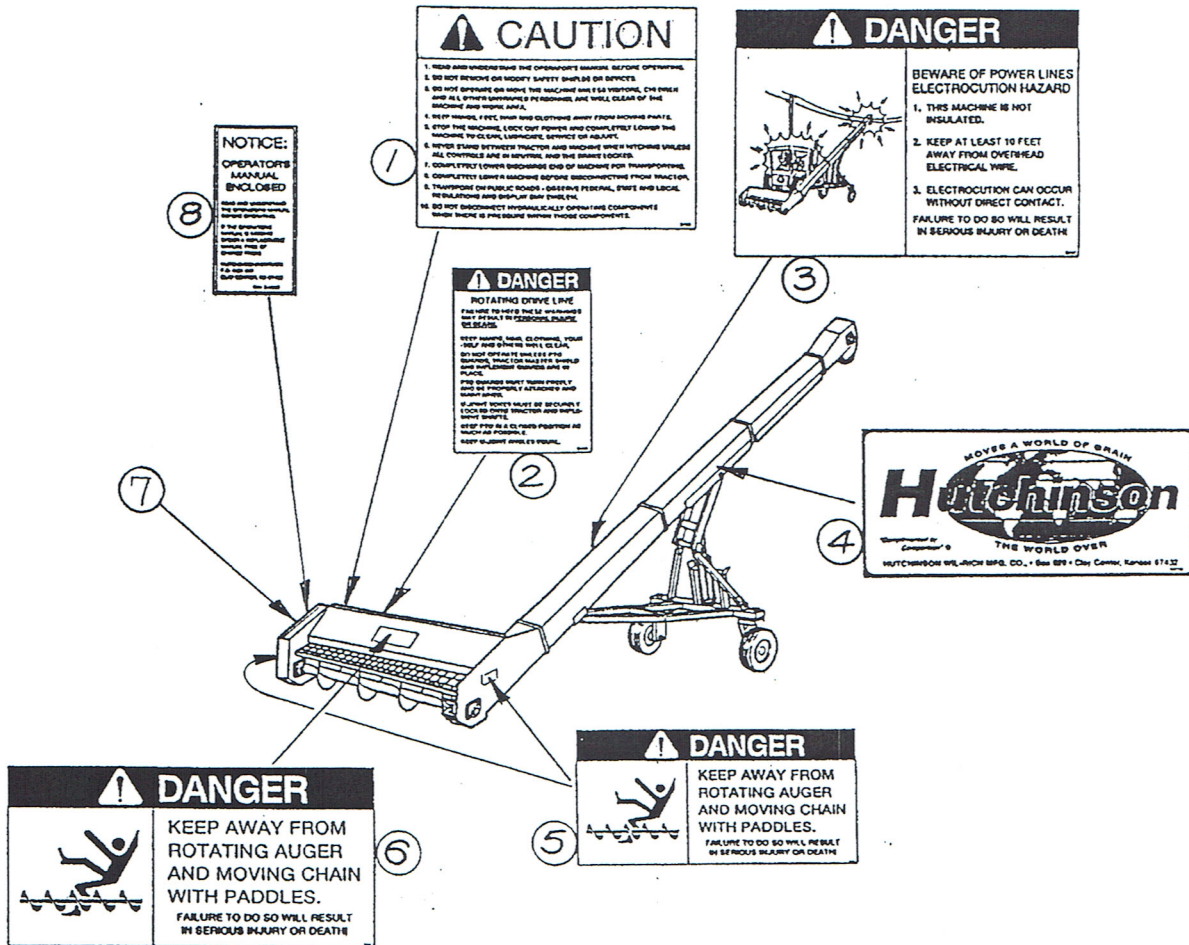
CHAIN & PADDLE



REF. NO.	PART NO.	DESCRIPTION
1	1038009	Chain 81XHH Roll of 10'-2 7/32" long (48 pitches)
2	1017077	Connecting Link for 81XHH Chain
3	1005588- OLD	1/2" Thick Model 85 Plastic Paddle (98 used on 40' Model) (122 used on 50' Model)
4	4736	Bolt 5/16" x 1-1/2" (Grade 5)
5	33023	Flat Washer 5/16"
6	33135	Lock Nut 5/16"
*	1034495	Chain Half Link, f/81XHH Chain

*Not Shown

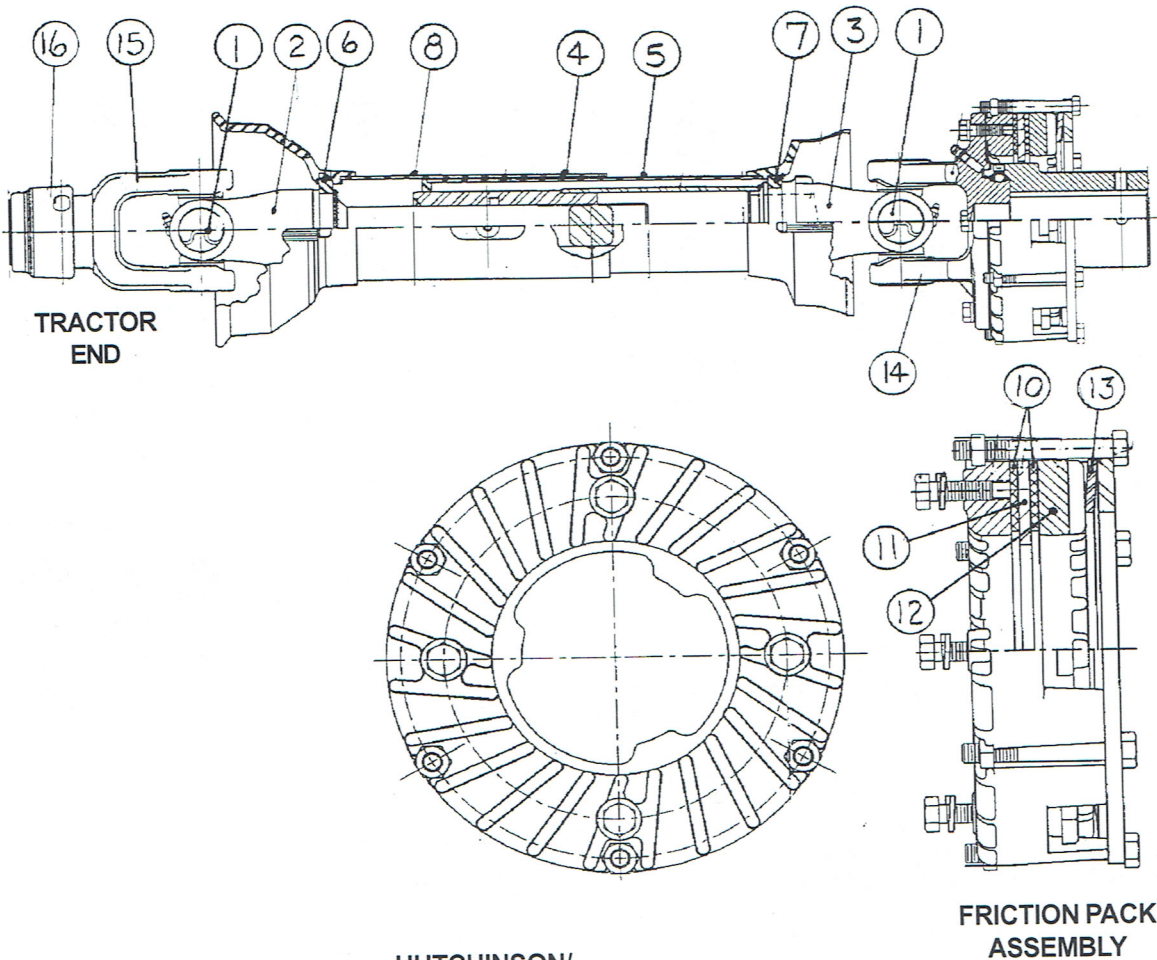
SAFETY AND MAINTENANCE SIGNS



REF. NO.	PART NO.	DESCRIPTION
1	1016973	Chain 81XHH Roll of 10'-10 1/2"
2	1017077	Connecting Link for 81XHH Chain
3	1017516	1/2" Thick Model 85 Plastic Paddle (75 used on 40' Model) (94 used on 50' Model)
4	1017517	Back-up Plate
5	4736	Bolt 5/16" x 1-1/2" (Grade 5)
6	33023	Flat Washer 5/16"
7	33151	Lock Nut 5/16"

PARTS LIST

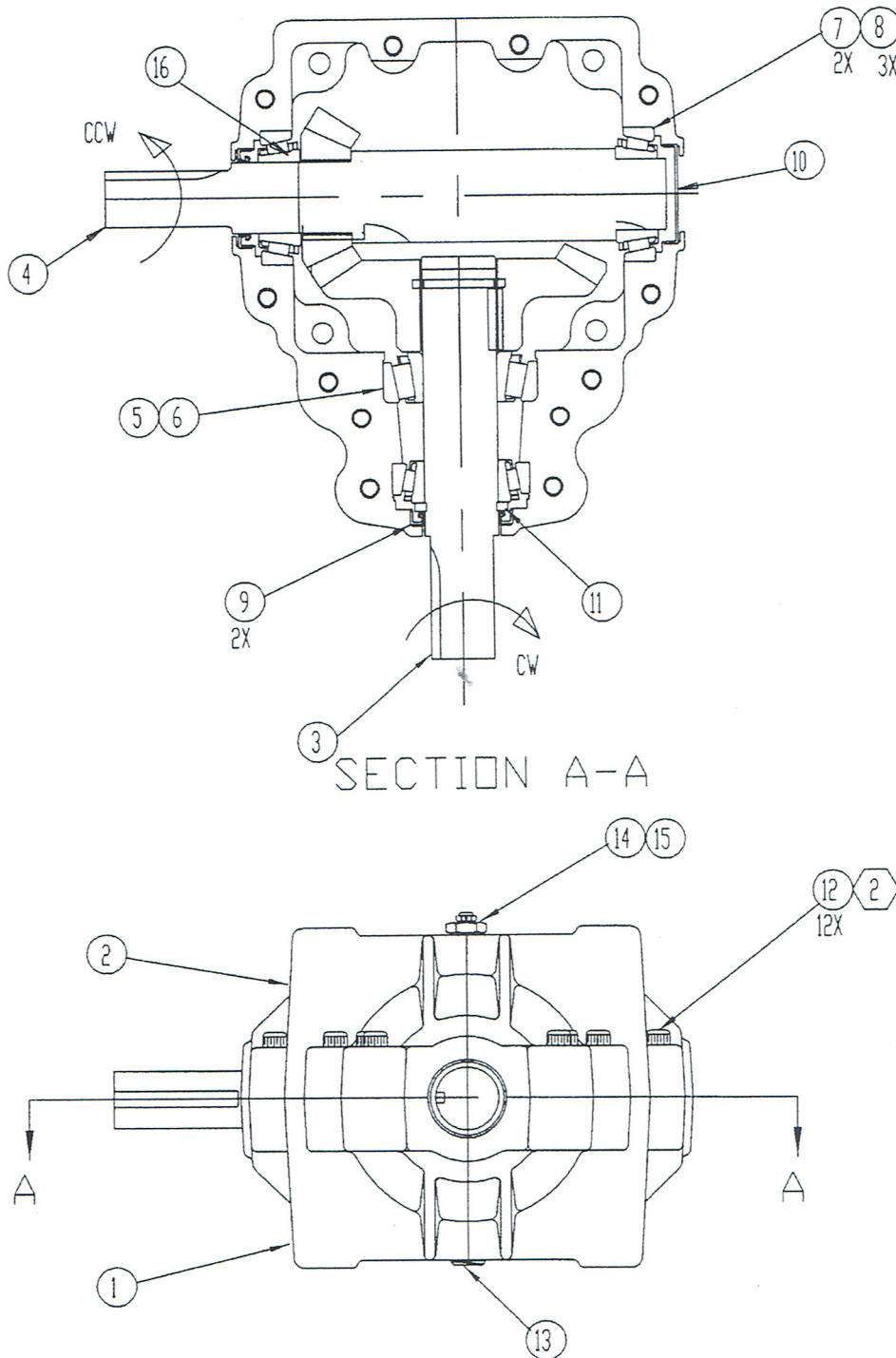
PTO DRIVELINE COMPONENTS



REF. NO.	WEASLER PART NO.	HUTCHINSON/MAYRATH PART NO.	DESCRIPTION
--	242-11813	1016538	PTO Driveline Assembly w/Clutch
--	38-50014	1023535	Clutch Friction Pack Assembly, 9,000 IN-LB
1	03-10045S	1010563	35R Cross and Bearing Kit
2	93-11813	1022487	Joint and Shaft Half Assembly with Guard
3	92-11813	1022488	Joint and Tube Half Assembly with Guard
4			Outer Guard
5			Inner Guard
6	19-11104	1010565	Nylon Repair Kit
7	19-11105	1026020	Nylon Repair Kit
8	13-10021	13-10021	Safety Sign
9	13-10022	13-10022	Safety Sign
10	11-11167	1022470	Friction Disc
11	20-15133	1022471	Separator Plate
12	80311-1000	1022472	Pressure Plate
13	23-15039	1023534	Spring
14	38-60016	1022486	Yoke & Free Motion Hub
15	35031-1015	1022491	Safety Slide Yoke Assembly
16	26-15120	1010561	Safety Slide Lock Repair Kit

GEARBOX COMPONENTS - 1018914

Shown below is a breakdown for Gearbox 1028914 used on current Trac-Masster starting with Serial Number 438549.



NOTE: Gearbox oil capacity is 85 oz. of EP 80/90.

PARTS LIST

GEARBOX COMPONENTS - 1018914

Use on current Trac-Master Conveyor starting
with Serial Number 428549.

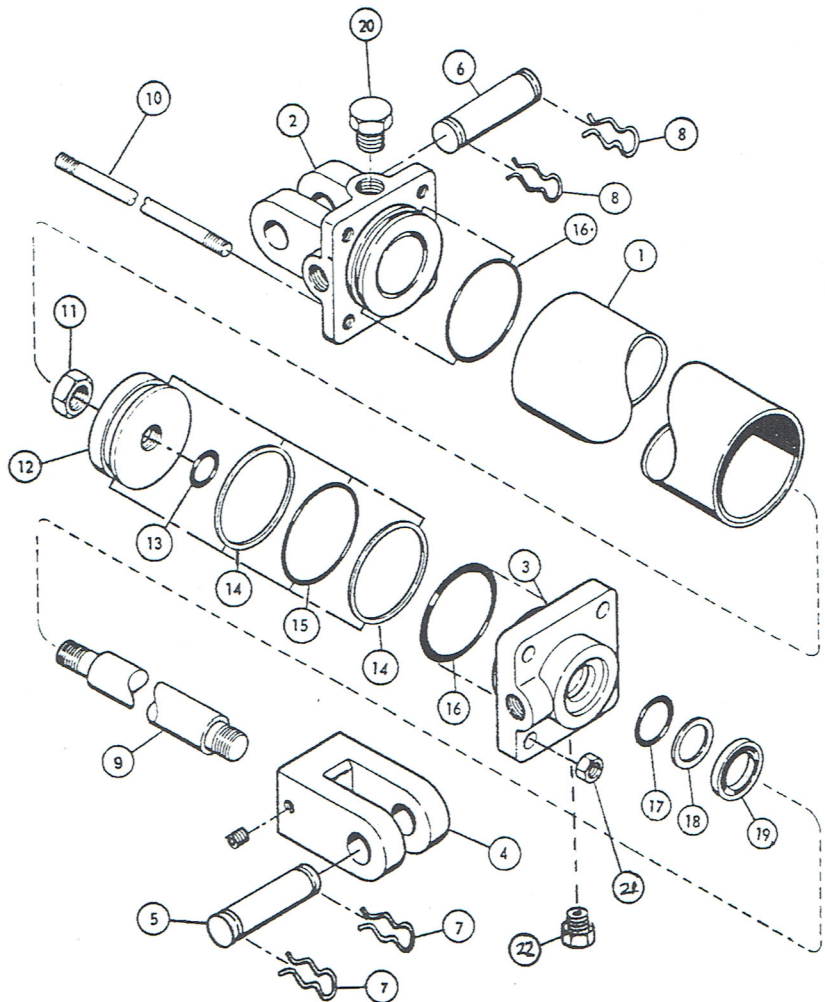
REF. NO.	SUPERIOR GEARBOX PART NO.	HUTCHINSON/ MAYRATH PART NO.	DESCRIPTION
1	600003006104	1022439	Housing Half
2	600004006105	1022440	Housing Half
3	R600-8B00-A0388	1022441	Gear and Shaft Assembly
4	R600-8B00-A0389	1022442	Gear and Shaft Assembly
5	603782	1022443	Bearing Cone
6	603720	1022444	Bearing Cup
7	625581	1022445	Bearing Cone
8	625520	1022446	Bearing Cup
9	617285	1022447	Seal
10	600301	1022448	End Cap
11	603493	1022449	Retaining Ring
12	438225	1006232	Bolt, 3/8 - 16 x 2-1/4" SH
13	400300	1022453	Plug, 1/2 - 14 NPT
14	4003VB	1022452	Bushing, 1/2" NPT to 1/8 NPT
15	2003PR	1022451	Vent Plug, 5 PSI
16	625580	1022450	Bearing Cone

HYDRAULIC CYLINDER COMPONENTS

PARTS LIST FOR CYLINDER NO. 420027

3-1/2" Bore x 24" Stroke with
1" Dia. Mounting Pins,
1-1/2" Dia. Piston Rod,
3/4 -16 SAE #8 Straight
Threads O-Ring Ports

IMPORTANT:
The cylinder was manufactured
by Cross Mfg., Inc.
Lewis, KS.



REF. NO.	HUTCHINSON/ MAYRATH PART NO.	CROSS PART NO.	DESCRIPTION
0	420159	1C4631	Seal kit for 3-1/2" x 24" DB Cross Cylinder
1	420199	1D0009-2650	Housing 3-1/2" x 24" DB Cross Cylinder
2	420188	1D1509-8	Base Clevis
3	420194	1D1159-17	Head Gland
4	420197	3C4559	Clevis Assembly
5 & 6	420183	1D1582-16300	Clevis Pin
7 & 8	41222	2A0308-1	Spring Clip
9	420198	1D0222-2862	Piston Rod 1 3/4" Dia.
10	420196	2A0581-2925	Tie Rod
11	420187	1A1141	Piston Nut
12	420189	1D1401-350	Piston
13			O-Ring
14	Available in		Piston Back-up Washer
15	Seal Kits		O-ring, (large)
16	Only		O-ring, (large)
17			O-ring, Base
18			Base, Back-up Washer
19			Wiper Seal
20	420184	2A0354-112	Solid Plug
21	420195	2A0236-9	Nut for Tie Rod
22	420034	--	Vent Plug