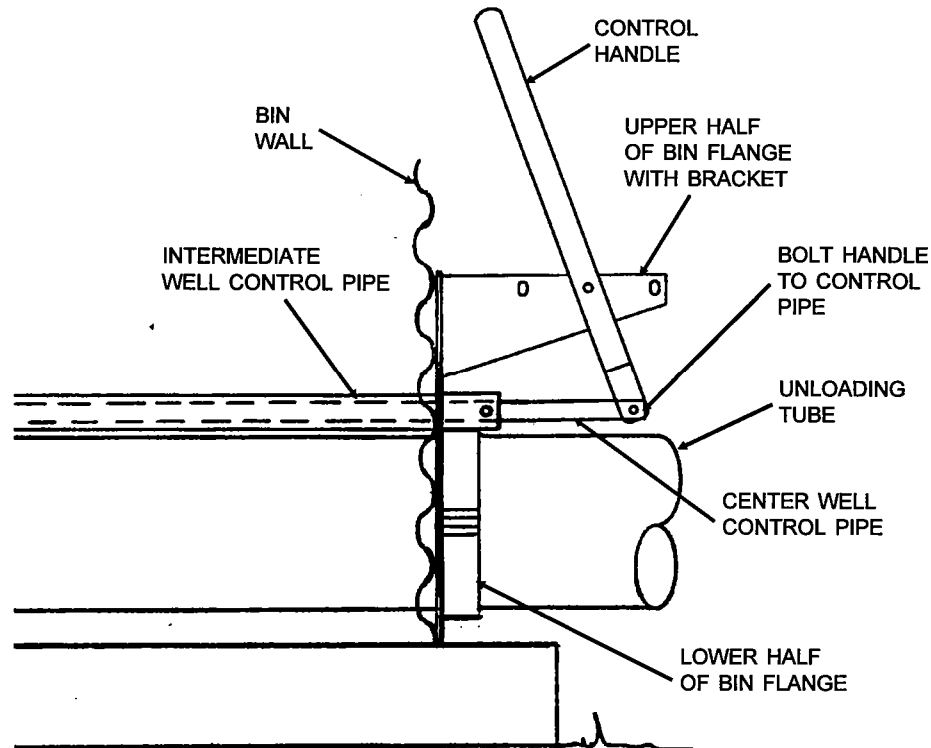


## BIN FLANGE WITH CONTROL HANDLE



### ASSEMBLY OF BIN FLANGE WITH CONTROL HANDLE

1. Cut a hole in the bin wall for the unloading tube. The hole should be cut just large enough for the tube and in position below the floor so it will be in alignment with the bin well or wells.
2. Place the two piece bin flange around the unloading tube on the outside of the bin at the bin wall. Hold in a level position and mark the well control pipe location on the bin wall through the hole in the flange plate. Cut a hole in the bin wall for the control pipe. If there are intermediate wells, the pipe will be 1 3/8" outside diameter. For only a center well the pipe will be 7/8" outside diameter.
3. With the two piece bin flange against the bin, bolt the flange to the unloading tube using bolts through the round clamps. The flange plate should be level. Drill holes for bolts in the bin wall using mounting holes in the flange plate. Bolt bin flange to bin wall.
4. For additional information on bin well control pipe assembly, request Publication No. 1012002.

### OPERATION OF CONTROL HANDLE

Bolt the handle to the center well control pipe. For best operation have a minimum amount of pipe extending out of the bin. Place the handle pin into one of the holes in the handle bracket to move the control pipe. To operate the intermediate well control pipe drill a hole and place a bolt through both the intermediate and center well control pipes when both controls are in the closed position. Then operation of the handle will move both controls.