



BULLETIN: AGI Lock-N-Load Floor Kits – Easyflow2 & Hutchinson

	a	GPM-SS-B-0050
ISSUED DATE		May 25, 2025
ISSUED BY		Niki Nazarewich
DISTRIBUTION		
BRAND		Easyflow2 & Hutchinson
PRODUCT FAMILY, CLASS & LINE		Storage
MODEL		Stiffened Bins
EFFECTIVE DATE		June 1, 2025,
MFG LOCATION		AGI St. Boniface

Overview

In line with AGI’s North American bin standardization initiative, floor kits utilizing AGI’s Lock-n-Load supports have been developed. These kits are specifically designed to accommodate either AGI Hutch or Easyflow2 unloads.

Product Information

Floor Kits:

- Full floor kits are available from 15’ to 78’ in diameter up to 100’ of grain depth.
- There are kit options to choose either FF (48’ max plank length) SF (32’ max plank length)
- Floor planks come in two perf sizes – 0.050 (canola) and 0.094 (cereal)
- Floor kits come with all required planking, supports, bridge tube (if applicable), flashing and hardware.

For Hutchinson unloads, the following floor kits are available:

- Full Floor Standard Duty – Kits & BOM’s
 - 1505 – 1514
 - 1805 – 1816
 - 2105 – 2119
 - 2405 – 2421
 - 2705 – 2725
 - 3005 – 3026
 - 3305 – 3326



- 3605 – 3626
- 3905 – 3926
- 4205 – 4224
- 4505 – 4524
- 4805 – 4824
- 5105 – 5125
- 5405 – 5425
- 6005 – 6026
- 6605 – 6627
- 7205 – 7226
- 7505 – 7526
- 7805 – 7826

➤ Split Floor Standard Duty – Kits & BOM's

- 3305 – 3326
- 3605 – 3626
- 3905 – 3926
- 4205 – 4225
- 4505 – 4524
- 4805 – 4824
- 5105 – 5125
- 5405 – 5425
- 6005 – 6026
- 6605 – 6627
- 7205 – 7226
- 7505 – 7526
- 7805 - 7826

➤ Full Floor Heavy Duty – Kits & BOM's

- 1505 – 1514
- 1805 – 1816

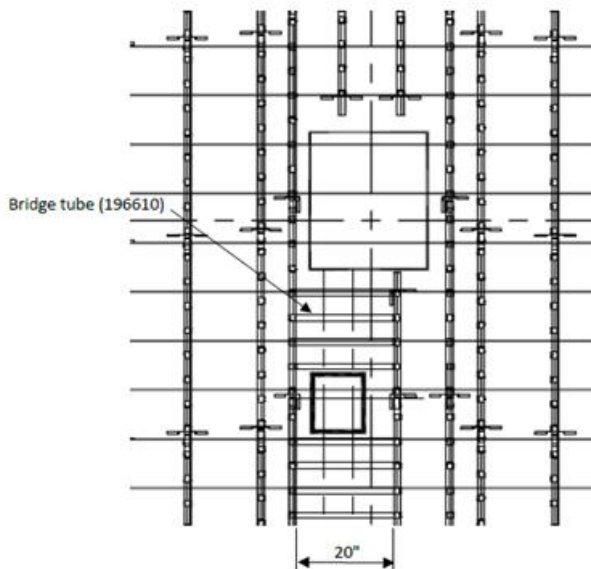


- 2105 – 2119
- 2405 – 2421
- 2705 – 2725
- 3005 – 3026
- 3305 – 3326
- 3605 – 3626
- 3905 – 3926
- 4205 – 4224
- 4505 – 4524
- 4805 – 4824
- 5105 – 5125
- 5405 – 5425
- 6005 – 6026
- 6605 – 6627
- 7205 – 7226
- 7505 – 7526
- 7805 – 7826
- Split Floor Heavy Duty – Kits & BOM's
 - 3305 – 3326
 - 3605 – 3626
 - 3905 – 3926
 - 4205 – 4225
 - 4505 – 4524
 - 4805 – 4824
 - 5105 – 5125
 - 5405 – 5425
 - 6005 – 6026
 - 6605 – 6627
 - 7205 – 7226

- 7505 – 7526
- 7805 – 7826

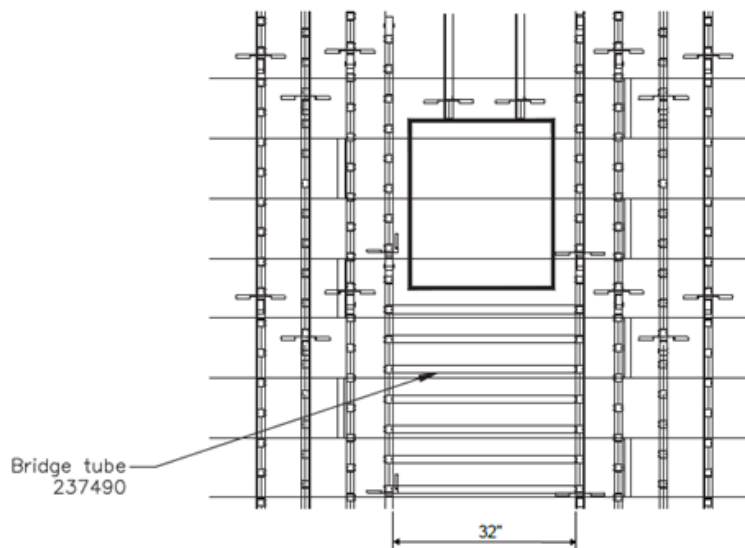
For the standard kits, where a bridge tube is required, the standard bridge tube (196610) is utilized.

Lock and Load Bridge System ($12'' < S$)



For larger or taller bins with the chalk line spacing $< 12''$, the longer bridge tube (237490) due to the width of the HD unload system.

Lock and Load Bridge System ($S \leq 12''$)





For Easyflow2 unloads, the following floor kits are available:

➤ Full Floor – Kits & BOM's

- 1505 – 1514
- 1805 – 1816
- 2105 – 2119
- 2405 – 2421
- 2705 – 2725
- 3005 – 3026
- 3305 – 3326
- 3605 – 3626
- 3905 – 3926
- 4205 – 4224
- 4505 – 4524
- 4805 – 4824
- 5105 – 5125
- 5405 – 5425
- 6005 – 6026
- 6605 – 6627
- 7205 – 7226
- 7505 – 7526
- 7805 – 7826

Split Floor – Kits & BOM's

- 3305 – 3326
- 3605 – 3626
- 3905 – 3926
- 4205 – 4225
- 4505 – 4524
- 4805 – 4824
- 5105 – 5125



- 5405 – 5425
- 6005 – 6026
- 6605 – 6627
- 7205 – 7226
- 7505 – 7525
- 7805 – 7826

Part Numbering Schematic Overview:

Each part number follows a standardized format that provides key information about the product. The structure typically includes size and specific features. This allows for quick identification and ensures consistency across all parts.

Part Number – **FF4205CER14**

- **FF** = Full Floor (maximum plank length 48')
- **4205** = Bin Size (42' diameter, 5-ring height)
- **CER** = Perforation type
- **14** = Floor Height
-

Part Number – **SF4205CAN14**

- **SF** = Split Floor (maximum plank length 32')
- **4205** = Bin Size (42' diameter, 5-ring height)
- **CAN** = Perforation type (canola)
- **14** = Rounded up floor height – Floor supports are 11.62" + Floor plank 1.77" = 13" ¼

Example:

FF1505CAN14 – Full Floor Canola 14" Kit for Easyflow2 Unloads

FF1505CAN14H – Full Floor Canola 14" Kit for **Hutch** Standard Unload

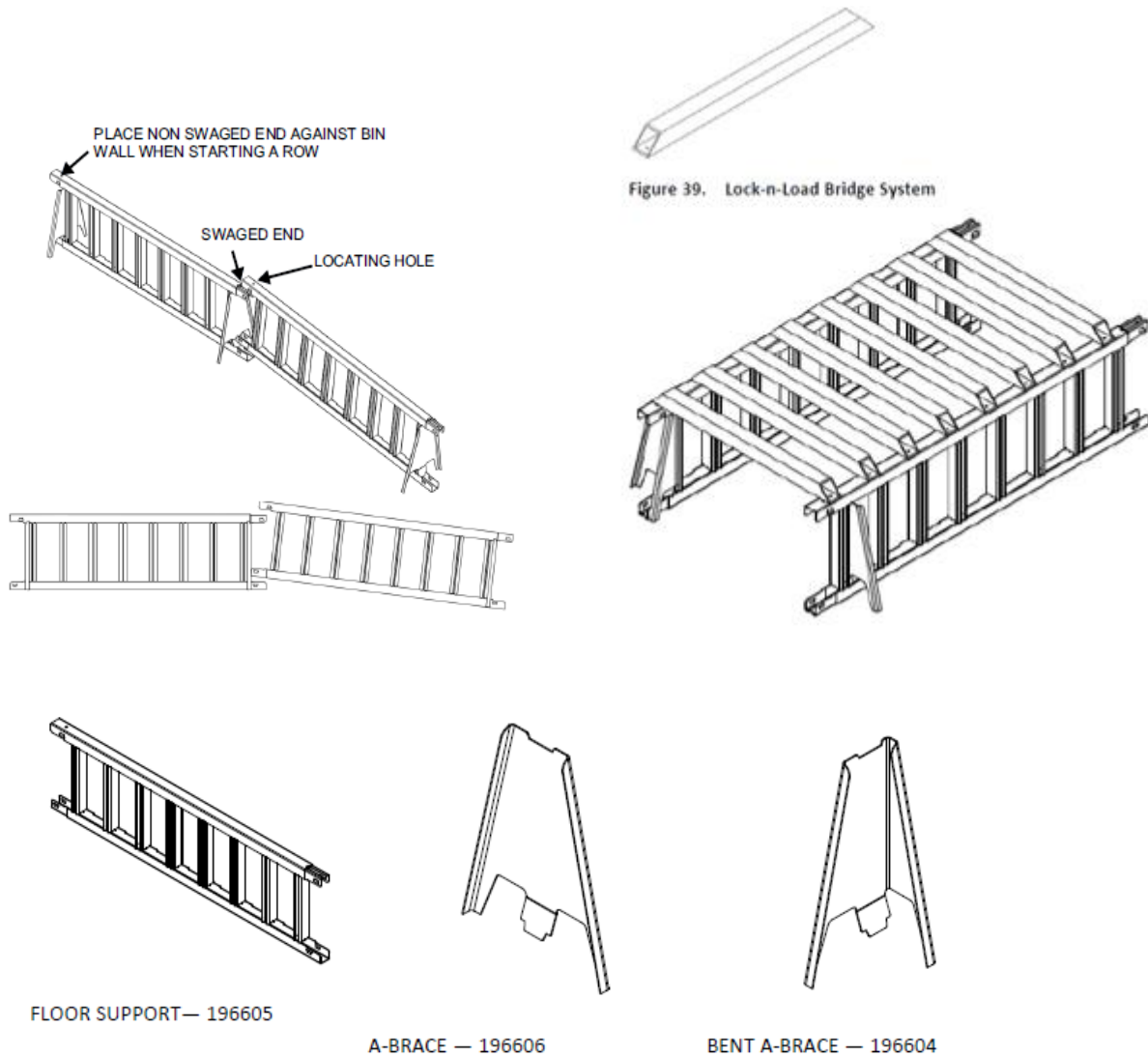
FF3305CER14 – Full Floor Cereal 14" Kit for Easyflow2 Unloads

FF3305CER14HD – Full Floor Cereal 14" Kit for Hutch **Heavy Duty**



Installation manual – 198836 Floor c/w Galvanized Support can be found on the AGI Dealer Support Site.

AGI Lock-N-Load – Support System Parts



Please contact your AGI Territory Manager or CX Representative at csr.USfarm@aggrowth.com (US) and/or csr.storage.wpg@aggrowth.com to get additional information and pricing for the expanded Lock-N-Load Floor kit offering.