

Unloads/Sweeps

Before leaving the site and filling the grain bin, check to ensure that all unloader components are functioning properly.

- Verify Wells & Control Mechanisms are working.
- Rotate powerhead and flight to ensure flight is free of obstructions and rotating smoothly.
- Open and close all unload gates to ensure that they are operating freely.
 - o **Important-make sure you leave gates in closed position.**
- Operate gearbox shifter to ensure the gear box sweep drive is functioning properly.
 - o **Important - ensure locking pin is used to lock the gearbox shift handle into the engaged and disengaged positions.**
- With the gear shifter engage rotate powerhead shaft manually if power not available a full revolution around the bin to make sure no adjustment is need it between the sweep and bin wall.
 - o **Important- make sure the gearbox is disengaged after testing.**
- Inspect Flighting
- Make sure all conduits or electrical wires are secured and away from any moving parts.
- Check V-Belt Tension on drive units.
- Ensure Oil Levels in all gearboxes are sufficient.
- Position the bin sweep so the intermediate gates are just in front of the bin sweep.
- Lubricate all grease fittings.
- Controls are label and all safety decals are visible, properly located.

Unloads SN _____

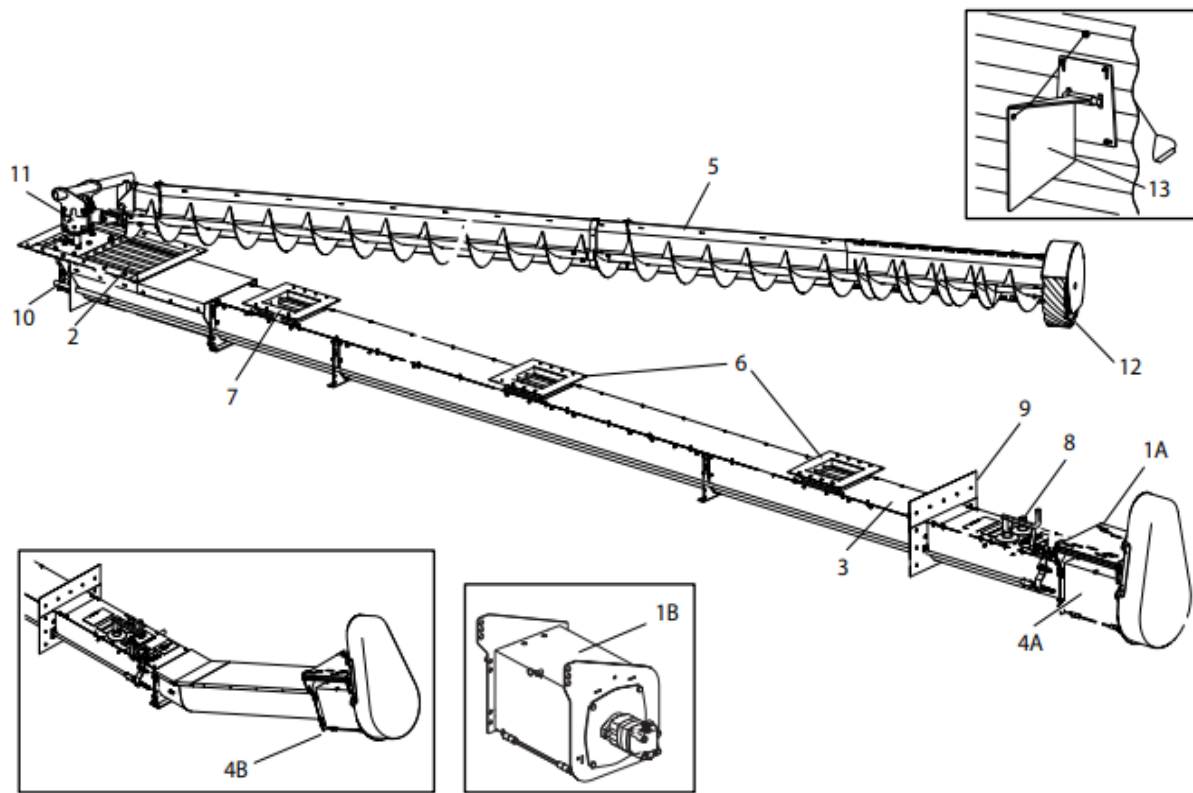
Year of Unload _____

Customer Name _____

Dealers Name _____

AGI EasyFlow2 Components Overview

Item	Description	Item	Description
1A	Electric Powerhead	7	Emergency Sump (E-Sump)
1B	Hydraulic Powerhead	8	Controls
2	Center Sump (Hopper)	9	Bin Adapter
3	Underfloor Auger	10	Lower Gearbox
4A	Horizontal Discharge	11	Upper Gearbox
4B	Incline Discharge	12	Sweep Drive Wheel
5	Bin Sweep	13	Sweep Stop
6	Intermediate Sump (Hopper)		



AGI EasyFlow2 Sweep Testing

To prevent damage to the unload system, DO NOT engage bin sweep while underfloor auger is operating.

Perform a test-run of the bin sweep after Electrical motor installed (one full revolution around bin).

During testing check the general function of the system and monitor the following:

- Ensure that the bushings (between sweep sections) are not interfering with the sweep flighting.
- Ensure sweep backboard does not catch on high spots on the aeration floor. If necessary, consult bin or aeration floor assembly manual to level.
- Observe the end of the bin sweep around the bin and note the position in its revolution which has the minimum clearance to the bin wall. This minimum clearance will later be used to adjust the sweep extender.
- Allow the end wheel to contact the sweep stop to ensure it prevents the sweep from advancing.
- Using the sweep stop cable outside of the bin, lift the sweep stop to ensure the end wheel will clear it and perform a second pass.

